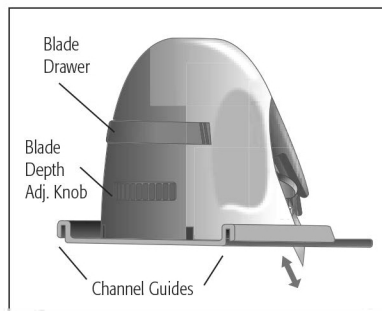
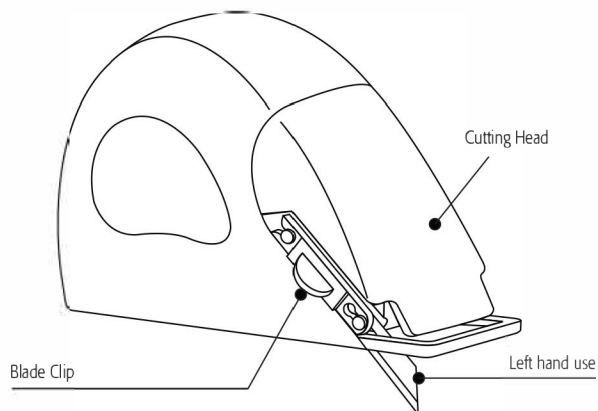


Straight Cutter

MODEL XTC-6010

CAUTION: BLADES EXTREMELY SHARP

Use replacement blades WC-5 and WC-20



Blade Storage Drawer - Located on the rear of the tool, used to store extra blades

Channel Guide - Clips onto Channel Rail (XT-3001) to create accurate, straight cuts

Blade Clip - Used to hold blade in place

Cutting Head - Flexible head that holds blade and is depressed to make cut

Blade Depth Adjustment Knob - Raises and lowers blade, which varies the total depth of the cut.

OPERATING INSTRUCTIONS

Blade Installation

- 1 Determine left or right hand use. Blade on right side is for left handed use. Blade on left side is for right handed use.
- 2 Remove yellow **Blade Clip** by pushing the clip forward.
- 3 Place the blade in the blade depression, matching the blade tip with the angle in the indentation.
- 4 Replace the **Blade Clip**, taking care to position the open end of the clip to the top. Slide upwards until clip snaps into place (**Fig. 1**)

NOTE: Spare blades can be stored in the **Blade Storage Drawer**, located on the back side of the Cutter. To open, squeeze the **Blade Storage Drawer** equally from left and right with fingers placed on the drawer ridges (**Fig. 2**).

Cutting

NOTE: Always protect tabletop with a scrap piece of foamboard underneath the material being cut.

- 1 **SAFETY NOTE:** Keep fingers clear of the blade area.
- 2 Using the XT-3001 Channel Rail (sold separately, or use the Logan Adapt-A-Rule or Team System), lightly mark the board to indicate where to cut.
- 3 Position the Channel Rail on the material on the cut line. Hook the **Channel Guide** onto the rail.
- 4 With the blade positioned off the top edge of the material, push the **Cutting Head** downward. With **Cutting Head** fully depressed, pull the Cutter backwards along the **Channel Rail** and continue along the length of the material (**Fig. 3**).

Blade Depth Setting

- 1 The blade can be raised or lowered by turning the **Blade Adjustment Knob** found on the back side of the Cutter (**Fig. 4**).
- 2 On bottom of cutter, the **Blade Depth Position Scale** provides a rough guide to the blade depth position (**Fig. 5**).
- 3 Sizes up to 1/2" (13mm) suitable material.

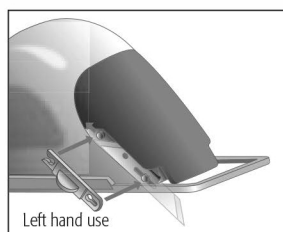


Fig. 1

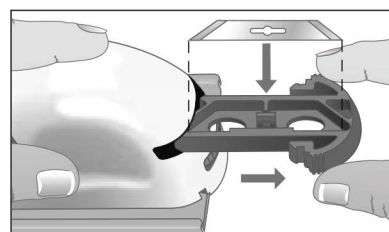


Fig. 2

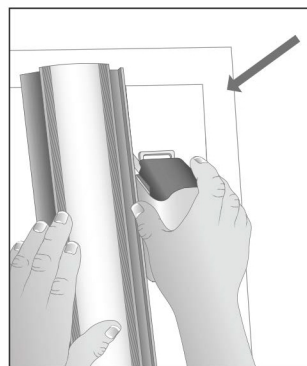


Fig. 3

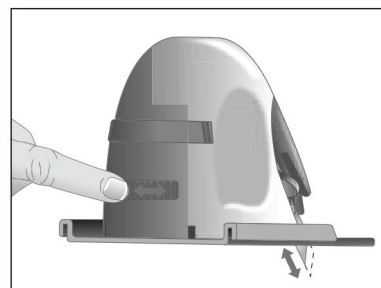


Fig. 4

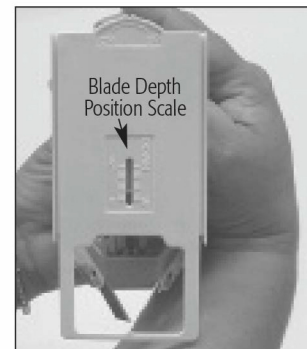


Fig. 5